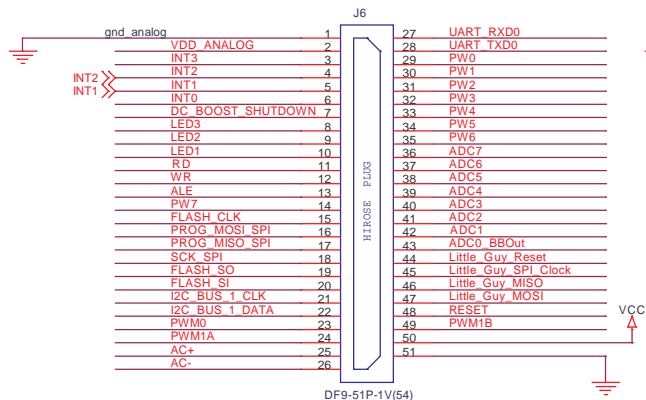
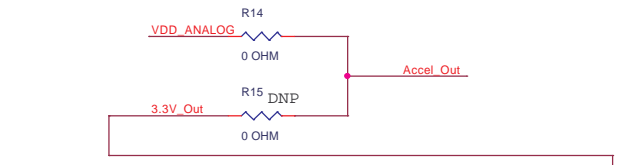
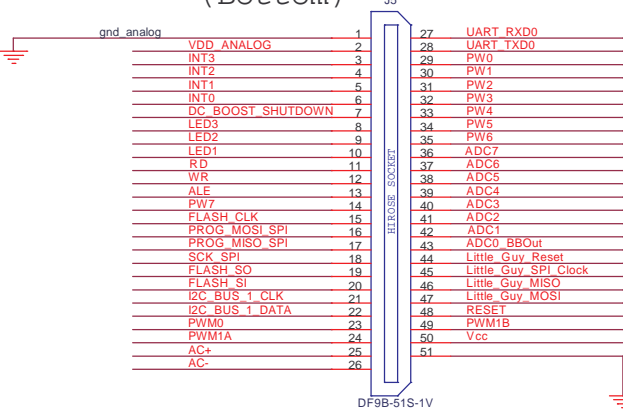


REVISIONS				
ZONE	REV	DESCRIPTION	DATE	APPROVED
ALL	A	INITIAL DESIGN	11-11-02	RPW

### Connector (Top)

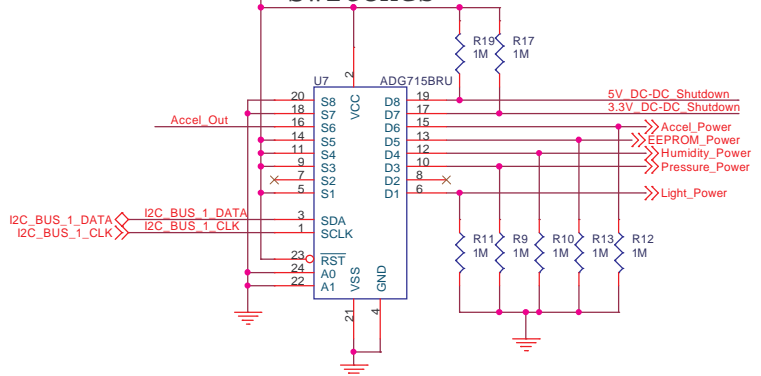


### Connector to Mica (Bottom)

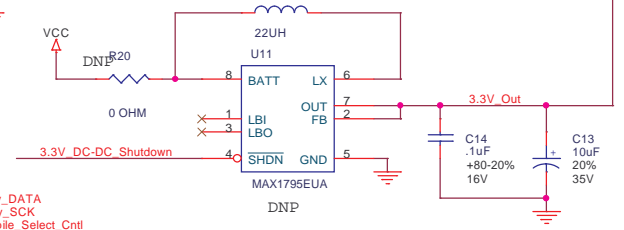
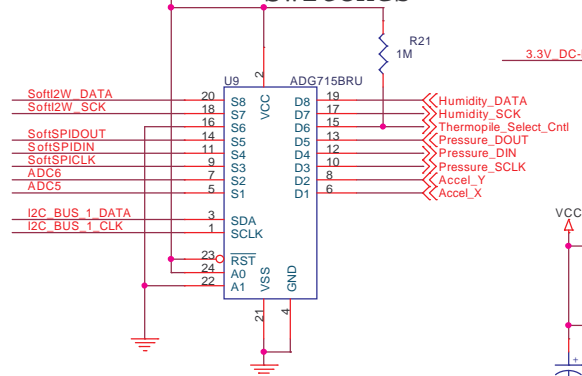


### 3.3V Boost DC/DC

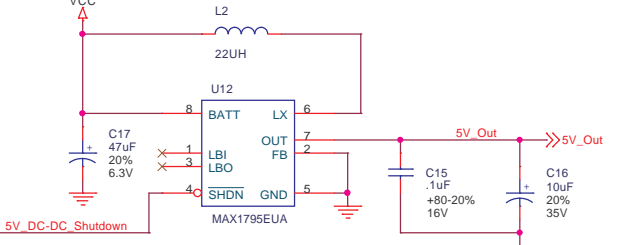
### Power Switches



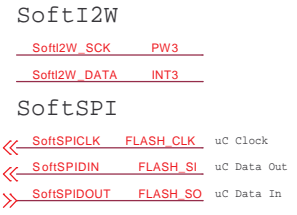
### Power Switches



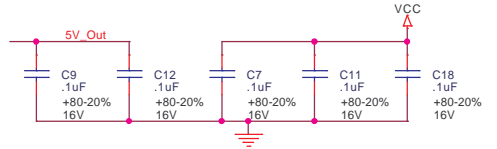
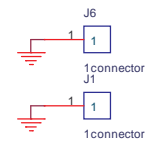
### 5V Boost DC/DC



### Pin Mappings



### Mounting Holes



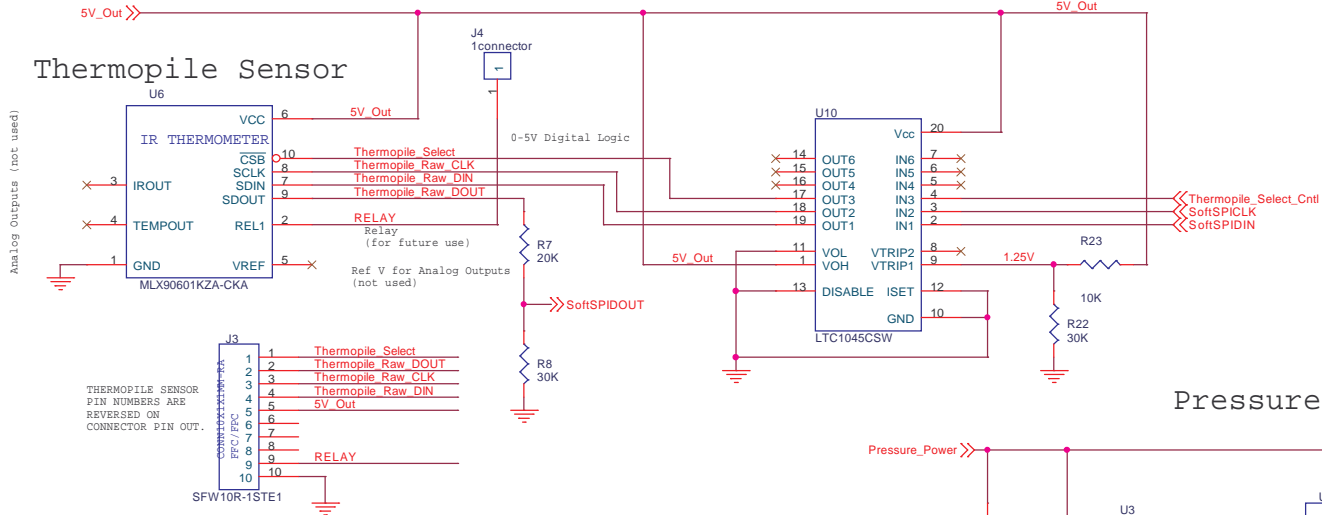
- NOTES: UNLESS OTHERWISE SPECIFIED.
- INTERPERT DRAWING IAW MIL-STD-100.
  - RESISTANCE VALUES ARE IN OHMS.
  - RESISTOR ARE 0402, 5%.
  - CAPACITANCE VALUES ARE IN FARADS.
  - .1uF CAPACITORS ARE 0402, +80%-20% 16V COMPONENTS.
  - PARTIAL REFERENCE DESIGNATIONS ARE SHOWN FOR COMPLETE REFERENCE. PREFIX WITH UNIT NUMBER, ASSY. DESIGNATION AND SUBASSEMBLY DESIGNATION.

**Crossbow Technology, Inc.**  
41 E. Daggett Drive San Jose, CA 95134

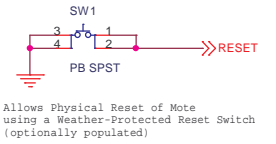
Title		
WEATHER BOARD		
Size	Document Number	Rev
B	6310-0307-01	A
Date:	Tuesday, December 03, 2002	Sheet 1 of 2

EXCEPT AS MAY BE OTHERWISE PROVIDED BY CONTRACT, THIS DRAWING OR SPECIFICATION IS THE PROPRIETARY PROPERTY OF CROSSBOW TECHNOLOGY INC. IT IS ISSUED IN STRICT CONFIDENCE AND SHALL NOT BE REPRODUCED OR COPIED OR USED (PARTIALLY OR WHOLLY) IN ANY MANNER WITHOUT PRIOR EXPRESS WRITTEN AUTHORIZATION OF CROSSBOW TECHNOLOGY INC.

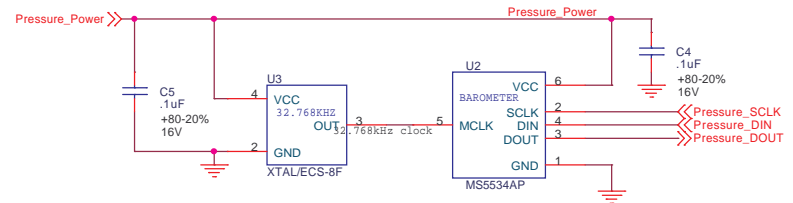
### Thermopile Sensor



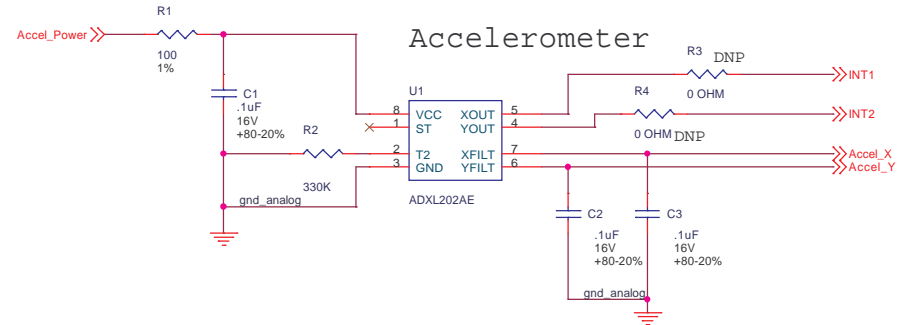
### Reset Switch



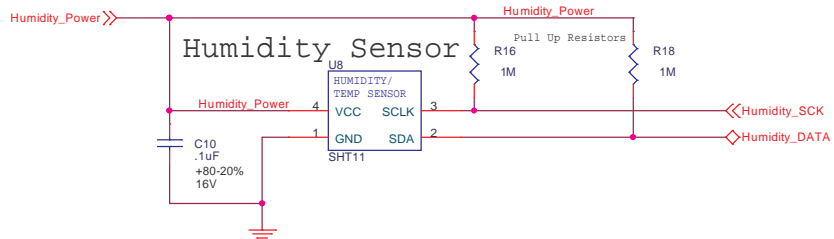
### Pressure Sensor



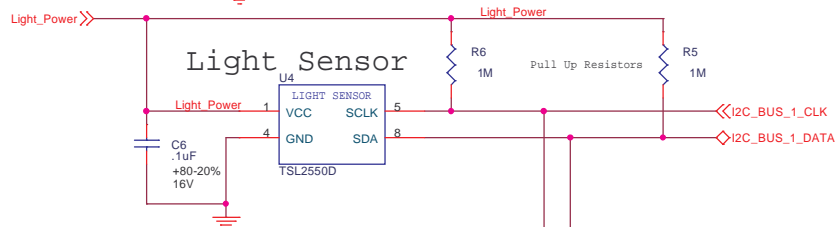
### Accelerometer



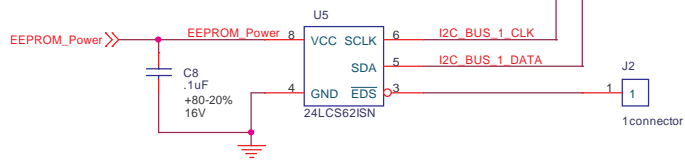
### Humidity Sensor



### Light Sensor



### I2C 2K Bit EEPROM



EXCEPT AS MAY BE OTHERWISE PROVIDED BY CONTRACT, THIS DRAWING OR SPECIFICATION IS THE PROPRIETARY PROPERTY OF CROSSBOW TECHNOLOGY INC. IT IS ISSUED IN STRICT CONFIDENCE AND SHALL NOT BE REPRODUCED OR COPIED OR USED (PARTIALLY OR WHOLLY) IN ANY MANNER WITHOUT PRIOR EXPRESS WRITTEN AUTHORIZATION OF CROSSBOW TECHNOLOGY INC.

WEATHER BOARD		
Size	Document Number	Rev
B	6310-0307-01	A
Date:	Tuesday, December 03, 2002	Sheet 2 of 2