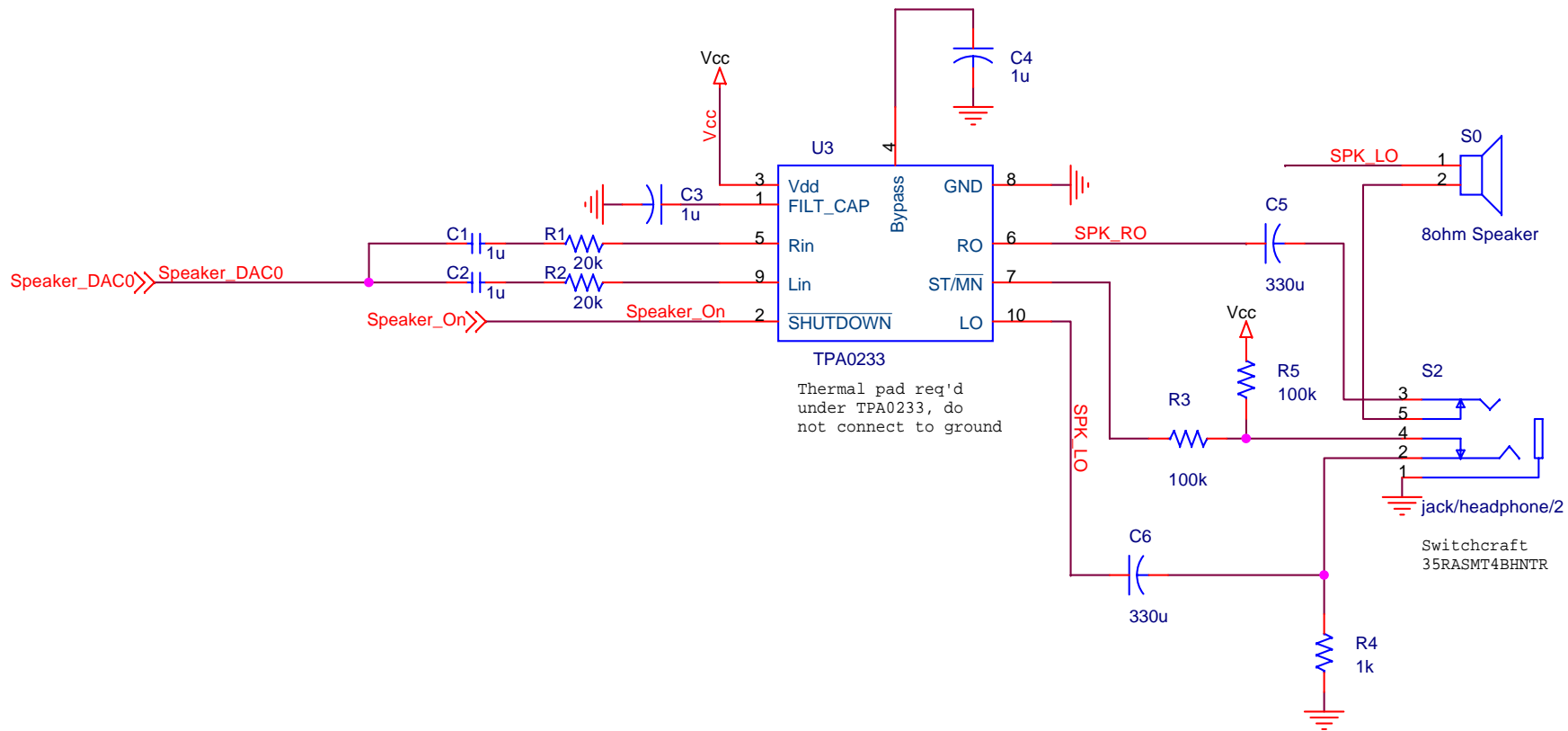


**I2C Addresses**  
 0x20 = MAX7315  
 0x2C = AD5242 10k U90  
 0x2D = AD5242 1m U91  
 0x2E = AD5247 10k U93  
 0x2F = AD5241 1m U92

<b>Telos Interface</b>		
Title		
<b>Telos Sensor Board</b>		
Size A	Document Number <b>(c) Copyright 2005: UC Berkeley / Polastre</b>	Rev A
Date:	Sunday, July 31, 2005	Sheet 1 of 6

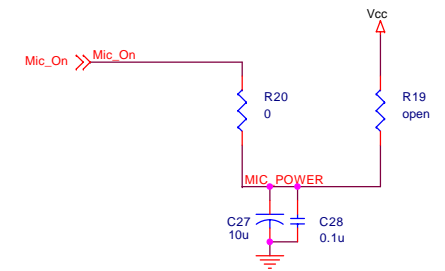
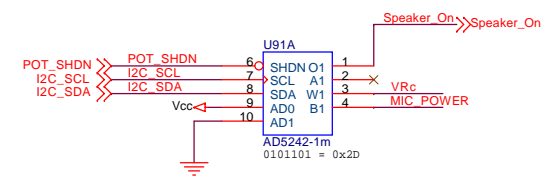
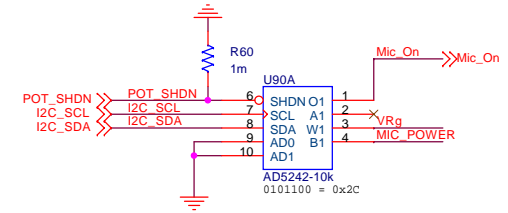
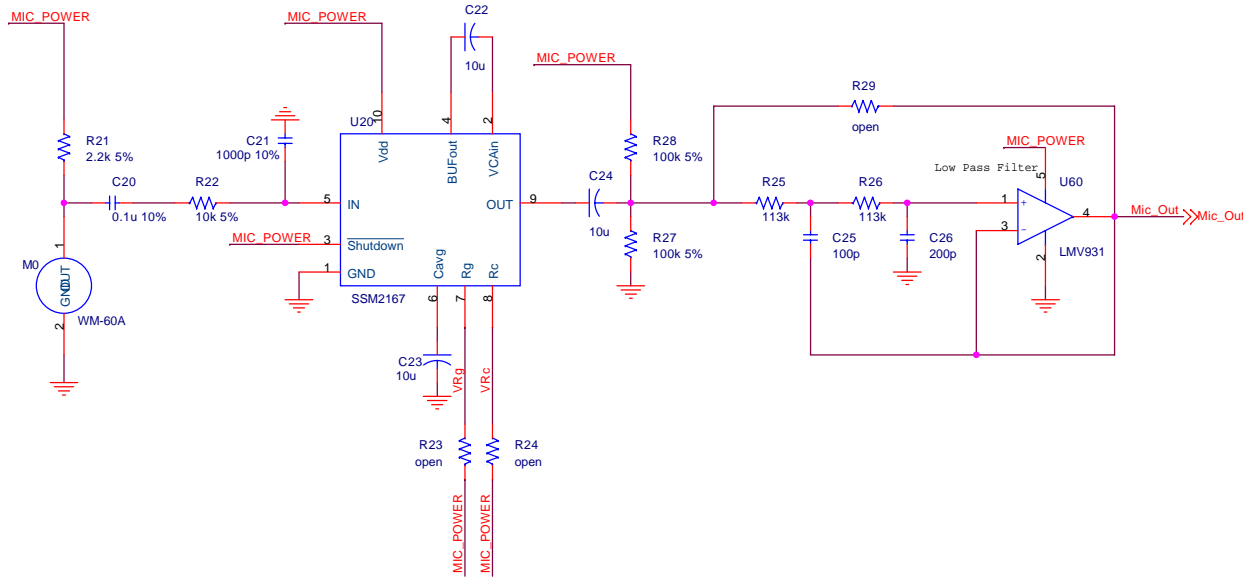




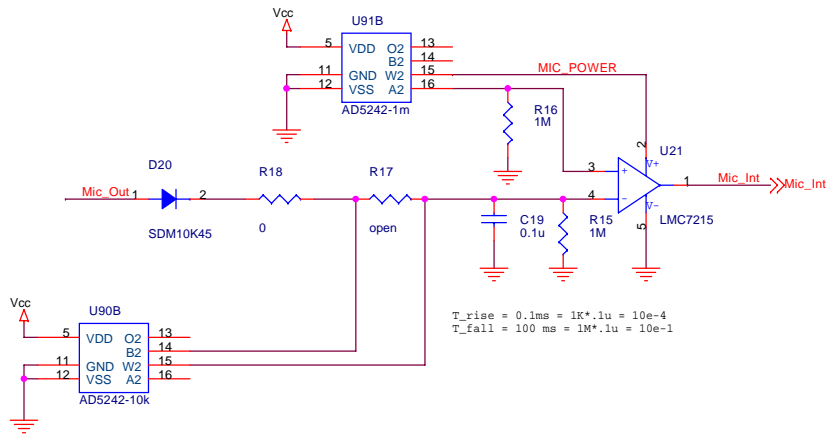
TPA0233  
Thermal pad req'd  
under TPA0233, do  
not connect to ground

<b>Speaker</b>		
Title		
<b>Telos Sensor Board</b>		
Size	Document Number	Rev
A	<b>(c) Copyright 2005: UC Berkeley / Polastre</b>	A
Date:	Sunday, July 31, 2005	Sheet 3 of 6

### Microphone Analog Signal Conditioning

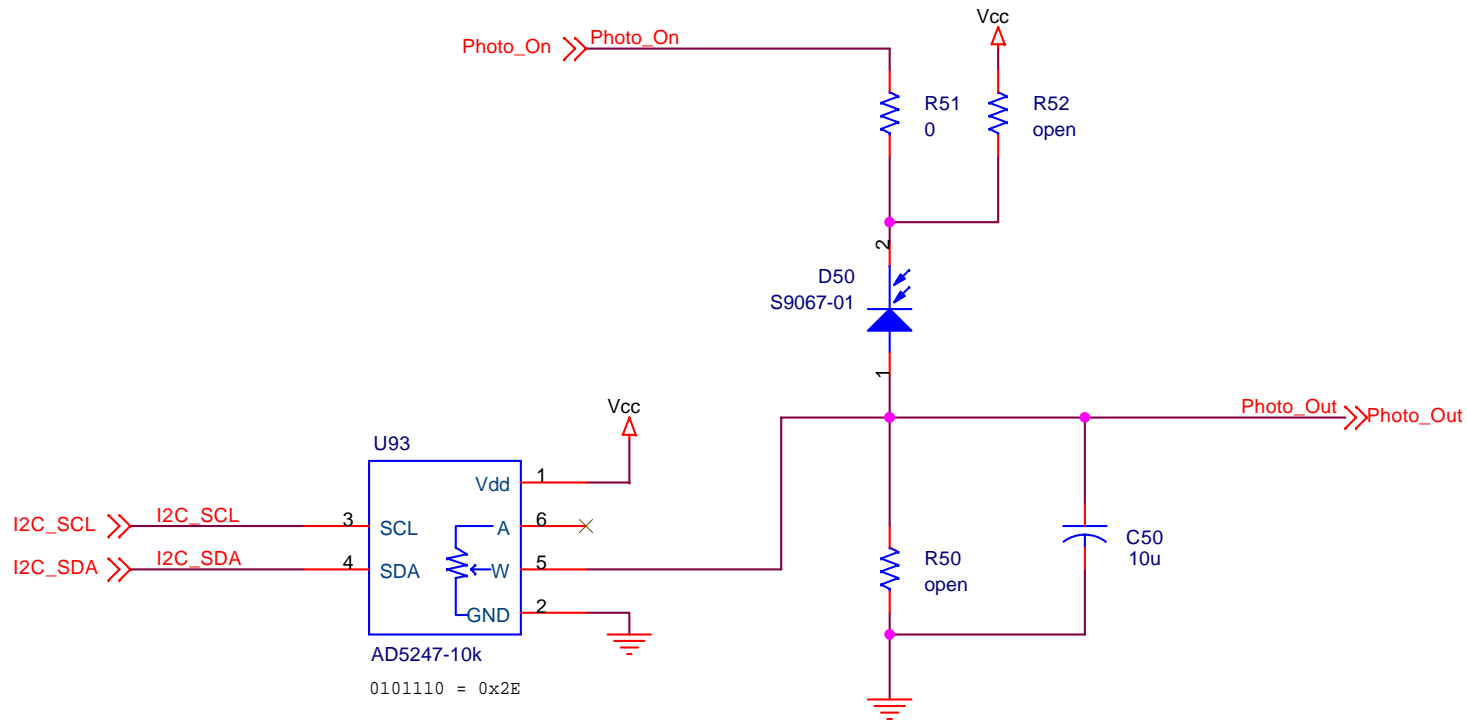


### Microphone Acoustic Wakeup



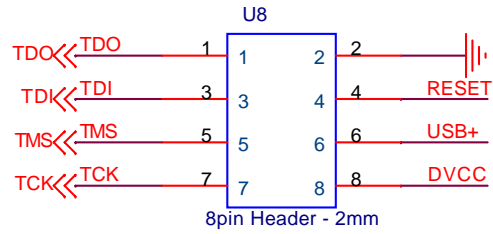
### Microphone

Title		<b>Telos Sensor Board</b>	
Size	Document Number	Rev	
B	(c) Copyright 2005: UC Berkeley / Polastre	A	
Date:	Sunday, July 31, 2005	Sheet	4 of 6

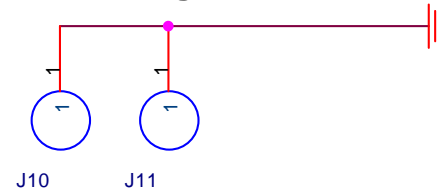


<b>Ambient Light Sensor</b>		
Title		
<b>Telos Sensor Board</b>		
Size A	Document Number <b>(c) Copyright 2005: UC Berkeley / Polastre</b>	Rev A
Date: Sunday, July 31, 2005	Sheet 5	of 6

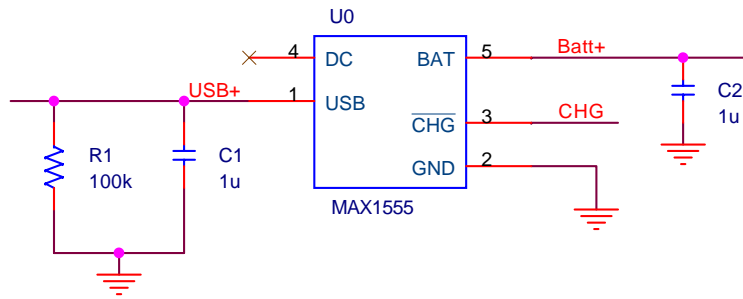
### JTAG Header



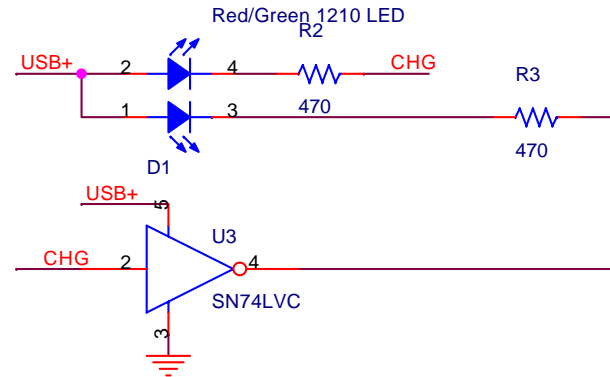
### Mounting Holes



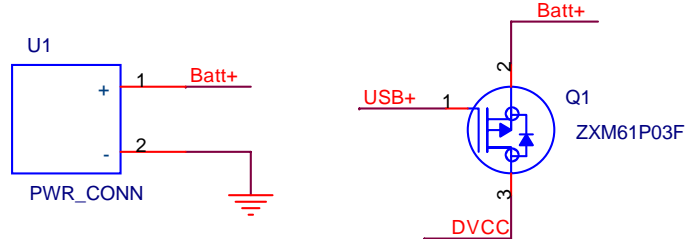
### Charge Controller



### Charge Indicator LED



### Li+ Battery Unload Battery when USB Present



## USB Li+ Battery Charger

Title		
Telos Sensor Board		
Size A	Document Number	Rev A
(c) Copyright 2005: UC Berkeley / Polastre		
Date:	Sunday, July 31, 2005	Sheet 6 of 6