

Title		
MICA DOT2 CPU SIDE		
Size	Document Number	Rev
B	6310-0300-01	A
Date:	Wednesday, October 23, 2002	Sheet 2 of 3

5

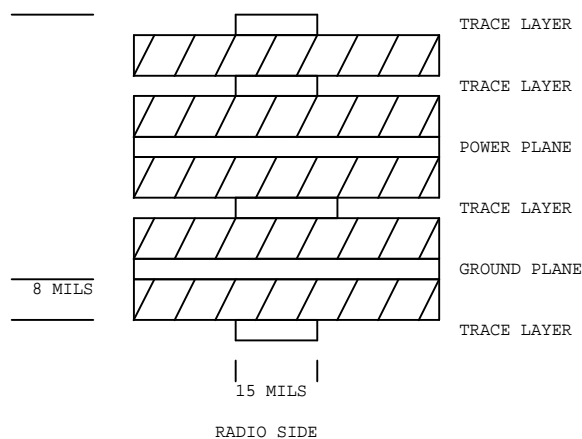
4

3

2

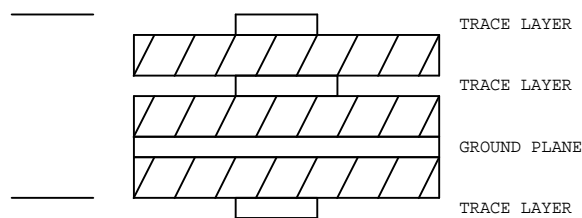
1

BATTERY SIDE



- 1) 50 OHM TRACES MUST BE MICROSTRIP ON BOTTOM OF BOARD
- 2) 1/2 OZ COPPER ALL LAYERS
- 3) TOTAL THICKNESS 0.032 INCHES
- 4) MATERIAL - FR4
- 5) TIN PLATED FINISH
- 6) BOARD DIMENSION = 25 MM DIA CIRCLE

HEADER CONNECTOR SIDE



Title		
MICA DOT2 LAYOUT STACKUP		
Size	Document Number	Rev
B	6310-0300-01	A
Date:	Wednesday, October 23, 2002	Sheet 3 of 3

5

4

3

2

1