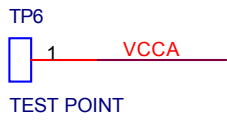
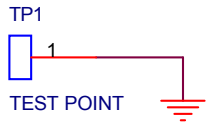
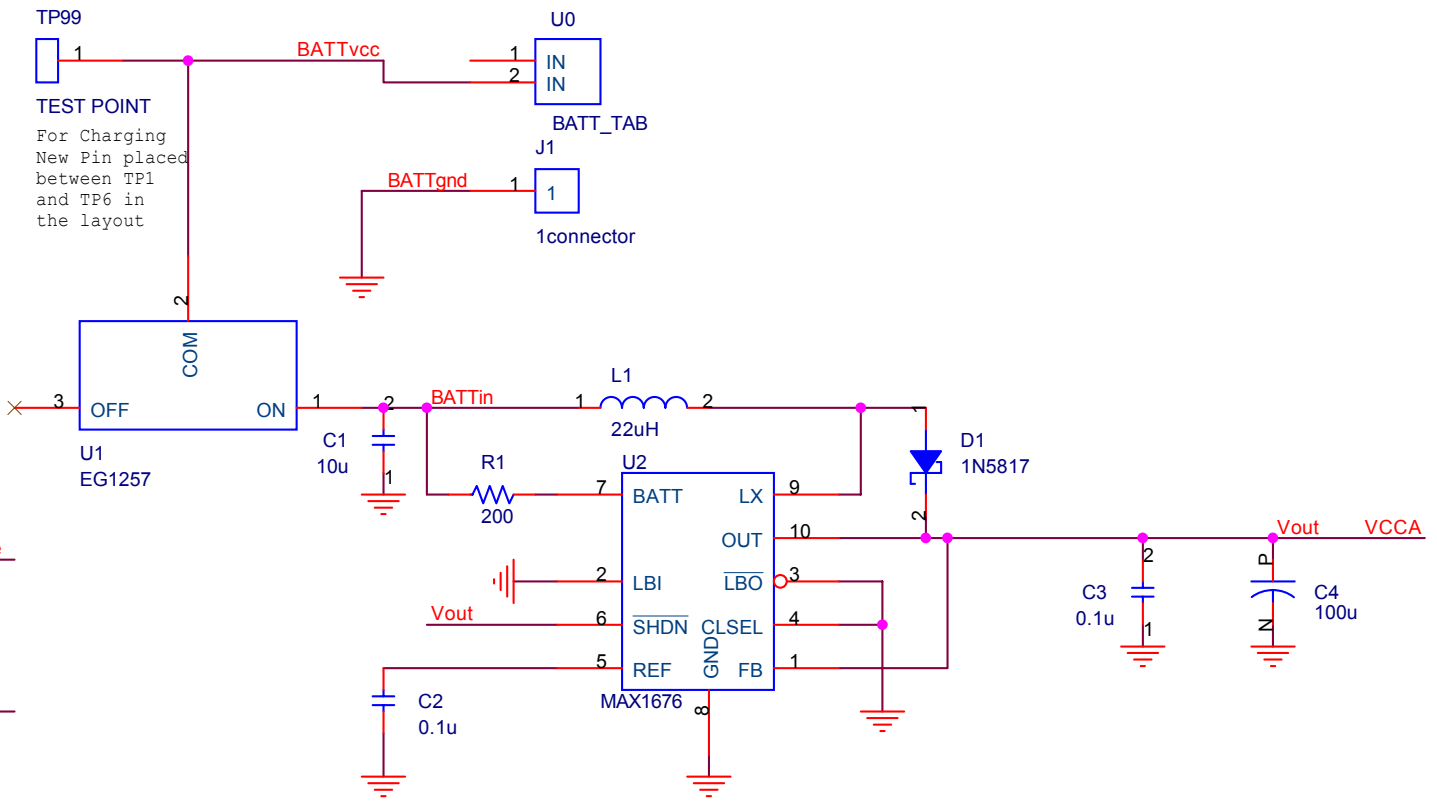


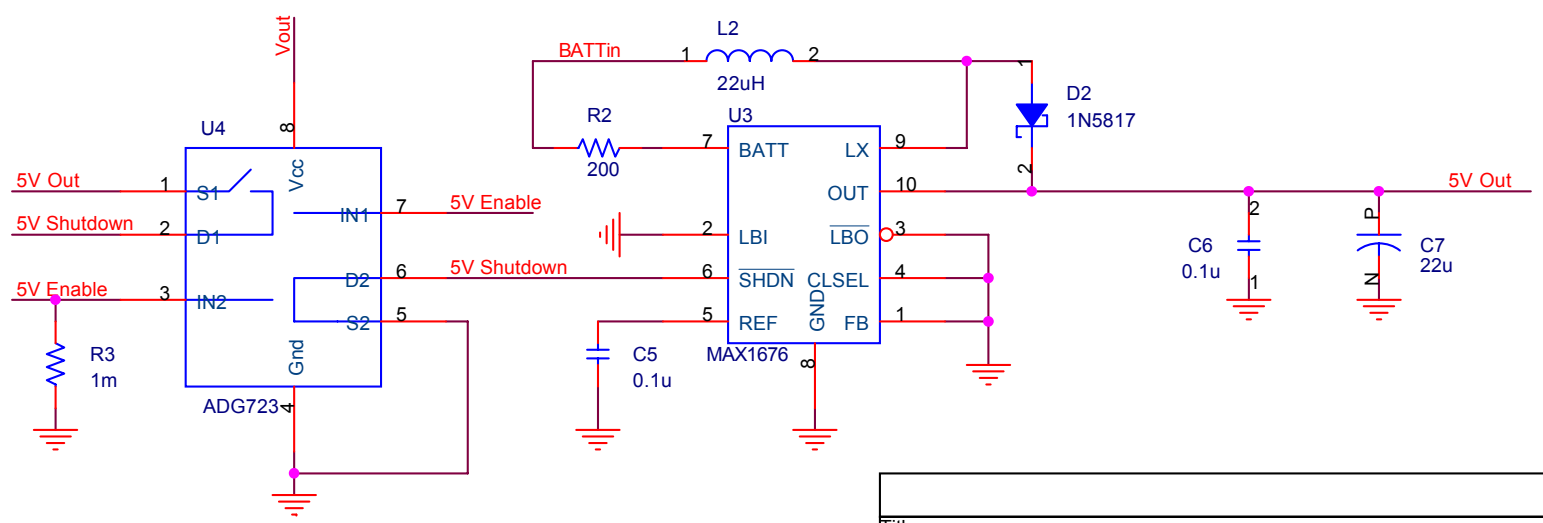
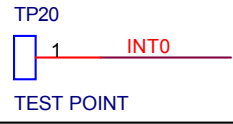
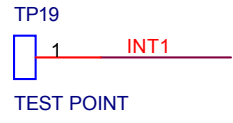
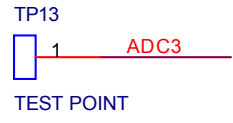
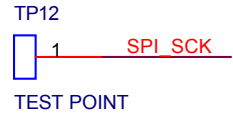
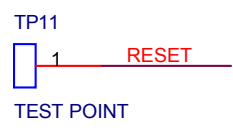
Mote GND/Vcc



TP99
TEST POINT
For Charging
New Pin placed
between TP1
and TP6 in
the layout



Pins for stability



Title		
Mlca2Dot NiMH Cell Board		
Size	Document Number	Rev
A	Joe Polastre	1.0
Date:	Saturday, May 17, 2003	Sheet 1 of 1