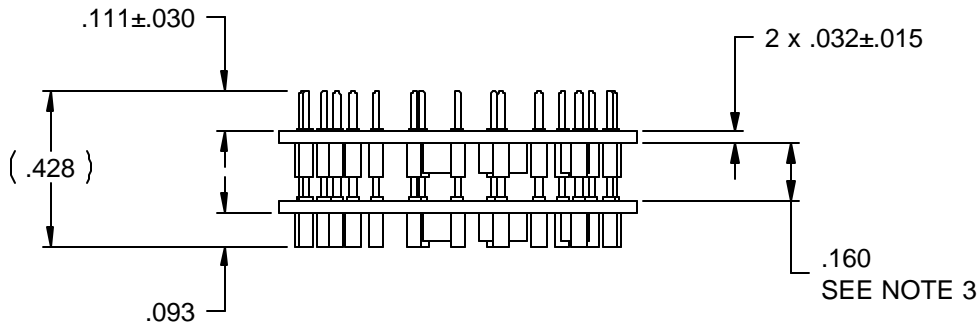
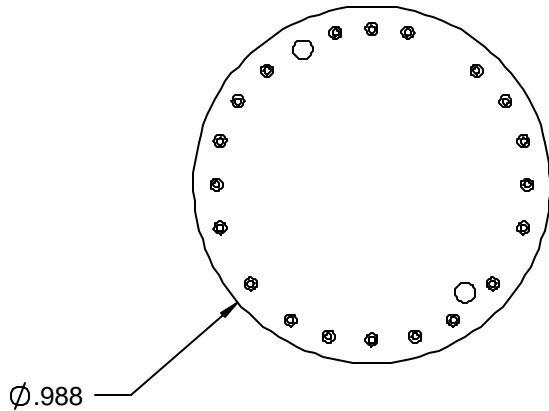


EXCEPT AS MAY BE OTHERWISE PROVIDED BY CONTRACT THIS DRAWING OR SPECIFICATION IS THE PROPRIETARY PROPERTY OF CROSSBOW TECHNOLOGY INC. IT IS ISSUED IN STRICT CONFIDENCE AND SHALL NOT BE REPRODUCED OR COPIED OR USED (PARTIALLY OR WHOLLY) IN ANY MANNER WITHOUT PRIOR EXPRESS WRITTEN AUTHORIZATION OF CROSSBOW TECHNOLOGY INC.


REV	REVISION DESCRIPTION	DATE	ECO#	BY
1	INITIAL RELEASE	2003 FEB 6	N/A	C. D. WAGNER

NOTES UNLESS OTHERWISE STATED:

- 1) INTERPRET DWG. PER ANSI Y14.5M-1994
- 2) CONTROLLING DIMENSION: INCHES
- 3) THIS IS A REFERENCE DIMENSION AND REPRESENTS AN APPROXIMATE MAXIMUM ASSEMBLED VALUE.
- 4) CONTENT OF THIS DRAWING SUBJECT TO CHANGE WITHOUT NOTICE.



PART NUMBER	DESCRIPTION
6800-0080-01	USED FOR ALL MIC 2 DOTS

<p>UNLESS OTHERWISE SPECIFIED DIMENSIONS ARE IN INCHES</p> <p>TOLERANCES ARE:</p> <table border="1"> <tr> <td>3 PL ± .010</td> <td>2 PL ± .015</td> <td>ANGLES 1°</td> </tr> </table> <p>MATERIAL:</p>	3 PL ± .010	2 PL ± .015	ANGLES 1°	<p>APPROVALS</p> <p>DWN C. D. WAGNER</p> <p>CHK</p>	<p>DATE</p> <p>203 FEB 6</p>	 <p>41 Daggett Dr. San Jose, CA 95134</p>
	3 PL ± .010	2 PL ± .015	ANGLES 1°			
	<p>APRVD</p>	<p>APRVD</p>	<p>TITLE</p> <p>ASM DWG, PCB STACK MICA 2 DOT</p>			
	<p>DO NOT SCALE DRAWING</p>	<p>APRVD</p>	<p>SIZE</p> <p>A</p>	<p>DWG. NO.</p> <p>6800-0080</p>		
<p>SCALE 2 : 1</p>	<p>SHEET 1 of 1</p>	<p>REV</p> <p>1</p>				